



KONICA MINOLTA

bizhub 754 & 654

Black and white speed, power,
quality and award-winning control



bizhub



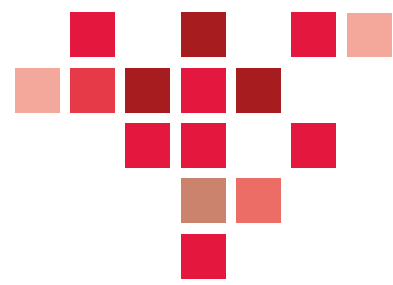
Superior black and white imaging

With revolutionary info-palette design

Konica Minolta's bizhub 754 and 654 represent a new generation of monochrome multifunction printer (MFP) performance, combining high-speed black and white print and copy output with colour scanning to bring any original into your workflow. An award-winning control panel provides multi-touch convenience, like familiar tablets – plus bizhub OP to make you more productive. Sharing information with greater speed and security, increasing your output while reducing your cost, protecting the environment more effectively – for all these reasons, you can depend upon Konica Minolta.



You can swipe, drag and drop, tap and toggle easily between map scroll and tab screen menus.



The award-winning look and feel of INFO-Palette design

Our INFO-Palette design earned Konica Minolta the 2013 BLI Line of the Year Award and 2012 Award for 'Outstanding Achievement in Control Panel Design' from BLI (Buyers Laboratory) – and once you see it in action, you will understand why.

Your fingers brush across the big, bright 9" colour screen in an intuitive multi-touch interface that works as easily as today's fastest mobile devices. You can swipe, drag and drop, tap and toggle easily between map scroll and tab screen menus. A long tap displays the next set of operating menus. Transparent menus let you see through to a lower level, so you always know where you are. You can simply touch a file stored in a User Box, drag it and release it in the print, store or send command area – even use two fingers to pinch in and out to enlarge or reduce a preview screen or rotate images.

On the screen, pop-up windows prompt your next steps. Simplified menus reduce the number of steps in every command sequence, with icons that can be customised to reflect the operations you use most often. Instead of tapping a keyboard icon, you can bring up a pop-up alphanumeric keyboard simply by pressing the command field in which text will be entered. An improved soft 10-key pad makes numerical input easier.

Soft 10-key pad position can be adjusted by end-users for optimal screen viewing. Tactile electrostatic keys provide touch-sensitive control and soft-sound feedback. Orange, blue and white LEDs are also easier to see for the vision-impaired. There's even an optional Voice Guidance system to provide audible control instructions.



Wireless and Bluetooth printing from mobile phones and printing from or saving to USB flash drives for greater convenience and versatility.

Proven expertise in fast-changing professional applications

In business offices large and small, the speed and power of bizhub document solutions raise the bar in print/copy/scan convenience. For specialised markets, the bizhub 754/654 add important functions and security enhancements for working professionals while protecting sensitive information. The PageScope® Mobile app enables busy professionals to print remotely from tablets and other mobile devices to networked bizhub MFPs.

The bizhub 754/654 can produce customised content in-house and on-demand, saving time and money. TWAIN scanning and tab printing make it easy to digitise material from multiple sources and create tabbed binders, reports and presentations. Enhanced security protects sensitive information – and each bizhub device also integrates with industry-standard cost-recovery programs.

For scanning and converting hard-copy records to electronic forms in professional applications like healthcare, law and education, the bizhub 754/654 has high-speed scanning, scan-to-folder capability and seamless integration with industry-standard software.



INFO-Palette design incorporates greater convenience for every employee with both software and hardware controls for fast, user-friendly operation.

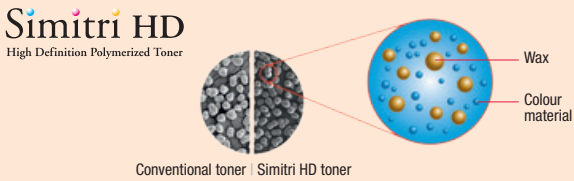
Cost-effective innovations to protect the environment

Along with proven expertise in serving business and professional document needs, Konica Minolta continually introduces new ways to save energy, reduce paper consumption, minimise pollutants and protect the environment.


With energy-saving modes, rapid warm-up and fast first-copy output times, the bizhub 754/654 achieve among lowest power consumption rates in their class. Their INFO-Palette design features a unique Eco-indicator that enables you to monitor paper, toner and energy usage by device, account or end-user to promote greater cost-consciousness. An optimised power consumption mode can automatically set correct on/off/ standby status for workdays, weekends and holidays.

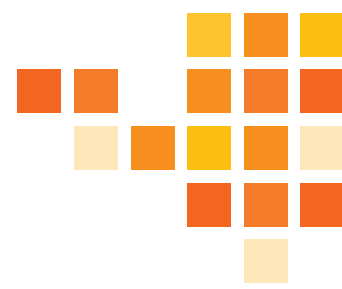
The bizhub 754 and 654 give you even more ways to save. A Print Preview Driver lets you preview documents before you print, reducing the chance of misprints. Blank Page Removal during printing saves more paper. Konica Minolta's exclusive Simitri® HD toner formulation uses biomass plant-based materials to reduce environmental impact and fuses to paper at lower temperatures to reduce power consumption.

In addition to the built-in savings of bizhub 754/654 operation, our Cartridges for Planet Ark program provides cost-free recycling for all your Konica Minolta consumables – including toner cartridges, developer and drums. And our Eco Vision 2050 project is committed to reducing CO2 emissions by 80% over 2005 levels – eliminating greenhouse gases that may contribute to global warming. For reducing costs and protecting the environment, you can always rely on Konica Minolta.



Simitri® HD polymerised toner is another Konica Minolta core technology that aids sound eco-performance. The latest generation of this high quality toner delivers better prints than ever, while its biomass ingredient helps reduce the bizhub 754 and 654's carbon emission further. Another environmental plus of Simitri HD is its easy deinking, which is essential to enable recycling of used paper.





Fast black and white printing and colour scanning



Both bizhub models feature fast dual-scanning document feeders that enable you to scan both sides of the page in a single pass, handling up to 180 originals per minute.

To move information faster

For high-volume document applications, complementary overflow for print-for-pay and corporate in-house print rooms, the bizhub 754 and 654 get the job done faster.

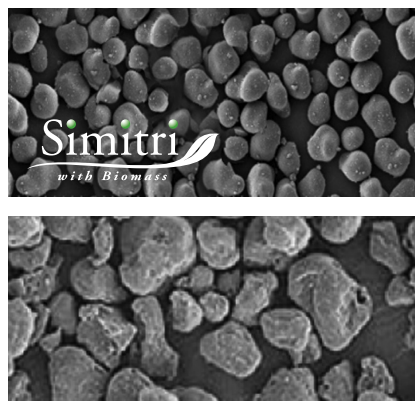
High-speed print/copy output handles rising workloads with ease. Standard dual scanning provides an ideal on-ramp for information in both black and white and colour. Support for a wide range of media, including oversized and heavy stock and powerful finishing options let you produce reports, presentations, training manuals, case files, course content, health information and human resource documents in-house and on-demand.

With bizhub OP (Open Platform) technology, Konica Minolta document solutions deliver an ideal balance of power and simplicity. Fast internal processing with a consistent control panel interface makes even first-time users more productive.

The built-in Emperon® print system gives you immediate PCL6/PS3 emulation and native XPS functionality. Universal printer drivers let you manage printing with standard familiar commands.

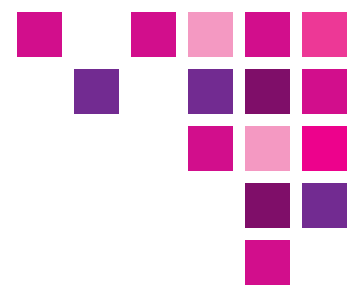
And bizhub Extended Solution Technology (bEST) provides seamless interface with 3rd-party software for business and specialised applications – a significant advantage for legal, educational and healthcare professionals.

True 1200 dpi print resolution reproduces crisp, clean halftone definition and makes text more legible, with type that stands out even against dark backgrounds. Konica Minolta's exclusive Simitri® HD polymerised toner uses smaller, more uniform particles to improve fine detail. And Intelligent Auto Exposure effectively detects and preserves faint thin lines and pale backgrounds. The overall result? The high-quality output you would expect from devices costing far more, but with simple setup procedures that save time and minimise the need for special training.



Konica Minolta's exclusive Simitri HD toner formulation uses smaller and more consistent particles, giving B&W reproductions greater detail and sharper, more legible text at 1200 dpi print resolution.





Paper sizes and weights to handle any job requirements

With in-house printing requirements continually changing, the bizhub 754/654 has been designed to accommodate a wide range of paper sizes and weights. Tab Printing lets you print tabbed pages from the multiple bypass tray – even use interleave function to insert tabs within the body of your document, for producing human resource packs, legal or educational binders and training or instruction manuals.

Four standard paper drawers give you 3,650-sheet capacity. Add the LU-301 Large Capacity Tray, and you can load up to 6,650 sheets for long unattended print/copy runs. Standard 100% duplex productivity at rated engine speed improves productivity to meet tight deadlines. And built-in technology allows you to identify print users, restrict or limit access, and control print/copy costs more effectively in busy public access areas of any government department, business office, school, hospital and more.

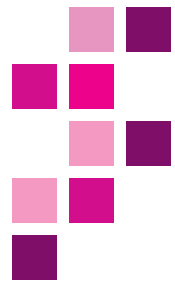
Modular finishing options for in-house productivity

With bizhub 754/654, you'll be able to customise a document solution for every need. The FS-535 Staple Finisher performs 100-sheet 3-position stapling, custom sorting and grouping. It accepts the SD-512 Saddle-Stitch Unit, to produce booklets up to 80 pages (20 sheets) or create centre-fold, half-fold and tri-fold documents. It also accepts the PK-521 Punch Kit available in either 2/4 or 2/3-hole punching at top or side, the ZU-606 Z-Fold Unit, and the PI-505 Post-Insertor to add pre-printed covers or chapter dividers.

FS-535/FS-534 Finishing Tasks and Necessary Options



		FS-535	FS-534
Stapling Function		Finisher FS-535 Up to 100 sheets	Finisher FS-534 Up to 50 sheets
Booklet Function & Folding Function		Finisher FS-535 + Saddle Sticher SD-512 Up to 20 sheets	Finisher FS-534 + Saddle Sticher SD-511 Up to 20 sheets
Z-Folding Function & Hole Punching Function		Finisher FS-535 + Z Folding Unit ZU-606 60 to 90gsm	
Hole Punching Function		Finisher FS-535 + Punch Kit PK-521 Punch Paper Up to 300 gsm	Finisher FS-534 + Punch Kit PK-520 Punch Paper Up to 300 gsm
Cover Sheets & Inter Sheets		Standard or Finisher FS-535 + Post Insertor PI-505	Standard
Long Length Paper		Banner Paper Setting Guide MK-715	Banner Paper Setting Guide MK-715



FS-535 100 sheet Staple Finisher**

Max. 3,000 sheet output capacity (80 gsm, 2,500 sheets when SD-512 is installed)
Staples up to 100 sheets (90 gsm)
A3-A5 lengthwise

** Optional*
† FS-534 50 Sheet Staple Finisher also available

Dual-sided Scanning

Scans 180 originals per minute duplex
Scans 90 originals per minute simplex
150 sheets (80 gsm)

USB Port

Saves files between HDD and USB

Multiple Bypass Tray

Max. SRA3
52-300 gsm
Up to 150 sheets

Banner Printing*

Holds 10 sheets of long length paper up to 297 mm x 1,200 mm

** Optional*

SD-511/SD-512 Saddle Kit*

Centre staple (Max. 20 sheets)
Half fold (Max. 5 sheets)
Tri-fold (Max. 3 sheets)

** Optional*

Tray 4

A5-A4
52-256 gsm
Up to 1,000 sheets

Tray 3

A5-A4
52-256 gsm
Up to 1,500 sheets

Tray 2

Max. SRA3
52-256 gsm
Up to 500 sheets

Tray 1

Max. SRA3
52-256 gsm
Up to 500 sheets

LU-204*†

Max. SRA3
52-256 gsm
2,500 sheets (80 gsm)

** Optional*
† LU-301 High Capacity A4 Document Feeder also available





Colour scanning solutions to streamline your workflow

Along with standard dual scan functionality, the bizhub 754/654 offers an unsurpassed array of scanning features and benefits – including colour scanning, to bring any original into your workflow with greater speed and flexibility.

You can scan directly to Email, FTP, and SMB with simple commands on your bizhub touch-screen panel. User boxes let you scan and distribute quickly to individuals, departments, workgroups, even projects. Scan-to-PowerPoint converts hard-copy documents to PowerPoint files. Scan-to-Me and Scan-to-Home capabilities add to your convenience and confidentiality. TWAIN scanning from PCs provides a smooth interface with legal and other specialised scanning solutions and the PageScope Mobile app enables you to send scanned data to mobile devices for use on business trips or in the field.

The optional FK-511 Fax Kit can add a high-volume Super G3 fax to your system, with single or dual-line faxing for all-in-one document productivity. A customised Scan/Fax Destination List speeds distribution by filtering your address searches. You can select from a wide range of scan formats, including PDF, compact PDF, PDF/A*, Linear PDF, TIFF, JPEG, XPS. WebDAV support simplifies management of server files and folders.

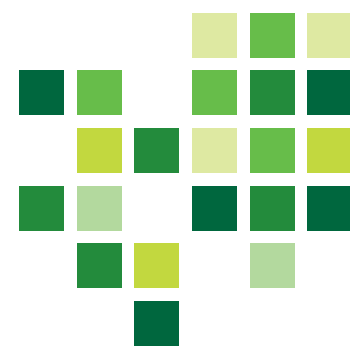
Faster, more efficient document distribution is achievable at a lower cost thanks to the new distributed scan function that's compatible with Windows 7 Servers, meaning you can automate your scanning workflow by sending documents directly to a 'Scan Server' set up to follow your instructions.

Print/copy functions to make each minute more productive

For high-volume central corporate reproduction departments or data centre applications, the bizhub 754 and 654 are built for speed. Black and white print/copy output up to 75 ppm (754) and 65 ppm (654) can handle even late-afternoon peak demands with ease. Standard dual scanning at up to 180 originals per minute lets you scan both sides of each page in a single pass, even in colour when needed – and rapid warm-up and first-copy output time makes each print/copy job move faster.

Along with faster output, you have print functions offering greater versatility – including banner printing, Bluetooth* printing from mobile phones, and printing from or saving to flash-memory devices via a convenient USB connector. Office Open XML Support lets you print docx, xlsx and pptx file formats.

You can save time with the Carbon Copy printing, a feature outputting the same data continuously from multiple paper trays in different paper types and sizes. With 'Single Sign-On' and Active Directory Authentication, your bizhub MFP can be accessed without re-entering your password if authentication was performed at the server when your PC was booted. The bizhub 754 and 654 promise maximum uptime with an accessible paper path with more visible parts to improve ease of servicing.



Options, security and applications



To handle every business demand

With bizhub 754 and 654, you'll have multiple options to meet current needs and prepare for future opportunities. Select i-Options to expand your productivity, and add security enhancements to protect sensitive information.

Boost your productivity with seamless integration with 3rd-party business applications for document scanning and management solutions, account tracking and cost recovery.

i-Option kits* to expand your bizhub functionality

i-Option kits increase the power of your bizhub MFP. LK-101 v3* gives you a web browser. LK-102 v3* combines PDF/A (1a/1b) formatting and AES 128-bit PDF encryption. You can add LK-104 v3* for Voice Guidance operation, LK-105 v3* to create Searchable PDF files and locate specific text references, LK-106*, 107* and 108* for Bar Code Font, Unicode Font and OCR Font support. With all these customising choices, your bizhub will be able to handle information in any form that suits your workflow.

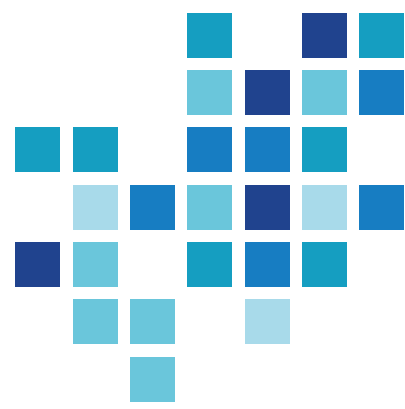
Enhanced security to safeguard documents and devices

In the digital era, electronic documents require additional security. Government, healthcare and legal applications must meet the highest standards in protecting the rights of citizens and the privacy of patients and clients. Educational institutions must safeguard student confidentiality and restrict access to customised course content.

To meet or exceed these needs, the bizhub 754 and 654 are currently in evaluation to meet strict ISO 15408 security standards – and offer a full array of standard safeguards as well as advanced options like Biometric Authentication, input for HID Proximity Cards, and Magnetic Stripe Cards.

Restricting access to print/copy devices is another key concern. With OPS bizhub SECURE, your service provider can initiate a powerful level of extra protections to guard your bizhub from unauthorised operation. PageScope Enterprise Suite provides server-based authentication and account tracking, so you will know when prints or copies were made and who made them.

An optional Copy Guard system requires password access to make copies. HDD Lock applies password protection to your bizhub hard disk drive. Job Erase function automatically overwrites your HDD up to three times. For those times when your bizhub is reassigned to another location or removed from service, HDD Sanitising can overwrite data in eight different modes so no sensitive information can be compromised.



Greater IT control with PageScope software

In addition to the server-based authentication and account tracking capabilities of PageScope Enterprise Suite, the bizhub 754 and 654 support a full array of PageScope software for managing documents and devices.

PageScope Web Connection and PageScope Net Care Device Manager enable individual users and IT administrators to manage multiple devices from a single point. PageScope Print Status Notifier provides automatic alerts to speed your workflow. PageScope Data Administrator™ handles addresses, passwords, and accounts with ease – and PageScope Box Operator: download and access scanned User Box data from your PC.

bEST design for seamless 3rd-party software integration

With INFO-Palette design, the bizhub 754/654 represent a breakthrough in MFP value and performance. PageScope software expands the range of bizhub functions. To complete the picture, Konica Minolta's bizhub Extended Software Technology (bEST) allows seamless integration with software programs from 3rd-party developers – software that speeds business workflow, manages print output, performs account tracking and cost-recovery, create direct-mail promotions and more.

In software applications, an Internal Web Server/Browser (IWS) eliminates the need for external servers. Seamless integration, simple operation, customized control – it all helps make your bizhub 754/654 the ideal platform for incorporating future software innovations.

bizhub 754/654 General Specifications

Type	Desktop	
Copy Resolution	Scan	Main: 600dpi × Sub: 600dpi
	Print	Copy: Main; 600 dpi × Sub; 600 dpi / Print: Main; 1,200 dpi × Sub; 1,200 dpi
Gradation	256	
Memory Capacity (Std./Max.)	2GB/4GB	
HDD	250GB	
Original Type	Sheets, Books, Objects	
Max. Original Size	A3 (11" × 17")	
Output Size	SRA3 to A5, B6S ¹ , A6S ¹ Thick paper, Foolscap ² (8-1/2" × 13-1/2", 200 mm × 330 mm, 8-1/8" × 13-1/4", 8-1/2" × 13", 8-1/4" × 13", 8" × 13"), 8K, 16K, Long Length Paper (210 × 457.3 mm to 297 × 1,200 mm)	
Image Loss	Max. 4.2 mm or less for top edge (5 mm for thin paper), Max. 3.0 mm or less for bottom edge, Max. 3.0 mm or less for right/left edges *A loss of 4.2 mm each during printing.	
Warm-Up Time (23°C, std. voltage) (May vary depending on the operating environment and usage.)	22 sec. or less (The time required to start printing when both the main power environment and usage.) and sub-power switches are turned from OFF to ON.)	
	22 sec. or less (The time required to start printing when the main power switch is ON and the sub-power switch is turned from OFF to ON.)	
First Copy Time ³	754 : 3.6 sec. or less 654 : 3.7 sec. or less	
Copy Speed (A4 Crosswise)	754 : 75 ppm 654 : 65 ppm	
Copy Magnification	Fixed Same Magnification	1:1±0.5% or less
	Scaling Up	1: 1.154/1.224/1.414/2.000
	Scaling Down	1: 0.866/0.816/0.707/0.500
	Preset	3 types
	Zoom	25-400% (in 0.1% increments)
	Lengthwise Crosswise Individual Settings	25-400% (in 0.1% increments)
Paper Capacity (80g/m ² paper)	Tray 1/2 : 500 sheets (up to SRA3), Tray 3 : 1,500 sheets (A4), Tray 4 : 1,000 sheets (A4), Multiple Bypass Tray : 150 sheets (up to SRA3)	
Max. Paper Capacity (80g/m ²)	6,650 sheets	
Paper Weight	Tray 1 - 4	52-256g/m ²
	Multiple Bypass Tray	52-300g/m ²
Multiple Copy	1-9,999 sheets	
Auto Duplex	Type: Non-Stack Paper Size: Width/100-320mm, Length/148-457.2mm Paper: Weight 52 to 256g/m ²	
Power Requirements	AC 230 V 10 A (50 to 60Hz)	
Max. Power Consumption	2.1kW or less	
Dimensions [W] × [D] × [H]	650mm × 799mm × 1,155mm (25-1/2" × 31-1/2" × 45-1/2")	
Weight	Approx. 201 kg (443-1/4 lb)	
Space Requirements ⁴ [W] × [D]	988 × 1,525 mm (39" × 60")	

Printer Specifications

Type	Embedded	
CPU	MPC8536 1.2 GHz	
Memory	Shared with the copier	
Print Speed	Same as Copy Speed (when using the same original)	
HDD	250 GB (Shared with the copier)	
Print Resolution	1,200 × 1,200 dpi	
PDL	PCL5e/c Emulation, PCL XL Ver. 2.1 Emulation, PostScript 3 Emulation (3016), XPS Ver. 1.0	
Protocol	TCP/IP, IPX/SPX (NDS support), SMB (NetBEUI), LPD, IPP1.1, SNMP, HTTP	
Support OS	Windows 2000 / XP / XP 64bit / Vista / Vista 64bit / 7 / 7 64bit Server 2003 / Server 2003 64bit / Server 2003 R2 / Server 2003 R2 64bit / Server 2008 / Server 2008 64bit, Mac OS 9.2 or later / Mac OS X 10.2 or later / Mac OS X10.4 (intel) or later, Linux	
Fonts	PCL	80 Roman fonts
	PS	137 Roman Type1 fonts
Interface	Ethernet (10BASE-T/100BASE-TX/1000BASE-T), USB 1.1, USB 2.0, USB Host	

* optional

Scanning Function Specifications

Type	Full-Colour Scanner	
Interface	Ethernet (10BASE-T/100BASE-TX/1000BASE-T)	
Driver	TWAIN Driver, HDD TWAIN Driver	
Protocol	TCP/IP (FTP, SMB, SMTP)	
Scanning Speed (Colour/B&W) (300dpi, A4 Crosswise)	Simplex: 90 opm Duplex: 180 opm	
Scanning Size	Max. A3 (11" × 17")	
Output Format	TIFF, JPEG, PDF, Compact PDF, XPS, Compact XPS, PPTx, Searchable PDF, PDF/A, Linearised PDF	
Scanning Resolution	Push	200dpi/300dpi/400dpi/600dpi
	Pull	100dpi / 200dpi / 300dpi / 400dpi / 600dpi
Main Functions	Scan to E-Mail, Scan to FTP, Scan to BOX (HDD), Scan to PC (SMB), Network TWAIN, Scan to WebDAV, Scan to Me, Scan to Home, Scan to USB, Scan to Scan Server, Scan to Web Service (WSD-Scan), Device Profile for Web Services (DPWS)	
Other Functions	Multi-Method Send, Authentication at the time of E-Mail send (SMTP authentication, POP before SMTP), S/MIME, Annotation	

Fax Kit FK-511 (Optional)

Communication	Super G3
Compatible Lines	Public Switch Telephone Network, Private Branch Exchange, Fax Communication Line
Line Density	G3 (8 dot/mm × 3.85 line/mm, 600 × 600 dpi)
Modem Speed	2.4 to 33.6 kbps
Compression	MH/MR/MMR/JBIG
Sending Paper Size	Max. A3 (Long Length Support: Max.1,000 mm)
Recording Paper Size	Max. A3 (Long Length Max. 1,000 mm - following the page division)
Transmission Speed	Less than 3 sec. (A4, V.34, 33.6 kbps, JBIG)
Memory	Shared with the copier
Number of Abbr. Dials	2,000
Number of Program Dials	400
Number of Group Dials	100
Sequential Multiple Station Transmission	Max. 600

Internet Fax

Protocol	SMTP, POP
Connection Mode	Full-Mode
Sending Paper Size	A3, B4, A4
Recording Paper Size	Max. A3
Resolution	200 × 100 dpi, 200 × 200 dpi, 400 × 400 dpi, 600 × 600 dpi
Interface	Ethernet (10BASE-T/100BASE-TX/1000BASE-T)
Colour	Support Colour Internet Fax
Format	Send: TIFF-F, Receive: TIFF-F Colour/Grey Scale: TIFF (RFC3949 Profile-C)

IP Address Fax (Optional) *Optional Fax Kit FK-511 is required.

Protocol Transmission	SMTP
Sending Paper Size	A3, B4, A4
Resolution	200 × 200 dpi, 400 × 400 dpi, 600 × 600 dpi
Format	Send: TIFF-F, Receive: TIFF-F Colour/Grey Scale: TIFF (RFC3949 Profile-C)



KONICA MINOLTA

Konica Minolta
Business Solutions Australia Pty Ltd

Free Call 1800 789 389
konicaminolta.com.au

New South Wales

4 Drake Avenue
Macquarie Park NSW 2113
(02) 8026 2222

Victoria

21-29 Moray Street
Southbank VIC 3006
(03) 8699 0777

Queensland

64 Brookes Street
Bowen Hills QLD 4006
(07) 3872 9100

ACT

1/55 Wentworth Avenue
Kingston ACT 2604
(02) 6206 6500

South Australia

255 Gilbert Street
Adelaide SA 5000
(08) 8231 2911

Western Australia

140 Hay Street,
Subiaco, WA, 6008
(08) 9479 6600



Product appearance, configuration and/or specifications are subject to change without notice.

The Konica Minolta logo and the symbol mark, and "The essentials of imaging" are registered trademarks or trademarks of Konica Minolta Holdings, Inc.
bizhub, PageScope, Simitri and the Emperon logo are registered trademarks or trademarks of KONICA MINOLTA BUSINESS TECHNOLOGIES, INC.
Windows is a registered trademark of Microsoft Corporation in the United States and other countries.
Adobe and PostScript are registered trademarks or trademarks of Adobe Systems Incorporated.
All other brand and product names are registered trademarks or trademarks of their respective owners.

Konica Minolta copiers and multi-functional peripherals are designed with the environment in mind.

- Have Earned ENERGY STAR for Energy Efficiency
- The Use of Recycled Materials
- Production at ISO-Certified Factories

This product has earned the ENERGY STAR for energy efficiency. ENERGY STAR is a U.S. registered mark.

Blue Angel Mark (BAM) (in evaluation)

The world's first environmental-protection label, introduced in Germany in 1978, certifies that products and services have low environmental impact.



ISO15408 (EAL Level 3) Certification (In evaluation)

These products comply with the security requirements of ISO15408 (EAL Level 3).
* The ISO 15408 certification applies only to IT security capabilities. This certification is NOT a product guarantee.



Requirements for safe use

- Please read and follow the instruction manual to ensure safe operation.
- Only operate using appropriate power supply and voltage.
- Connecting the earth wire to an inappropriate place may cause explosion or electric shock. Please connect accordingly (Taiwan and the Philippines only).